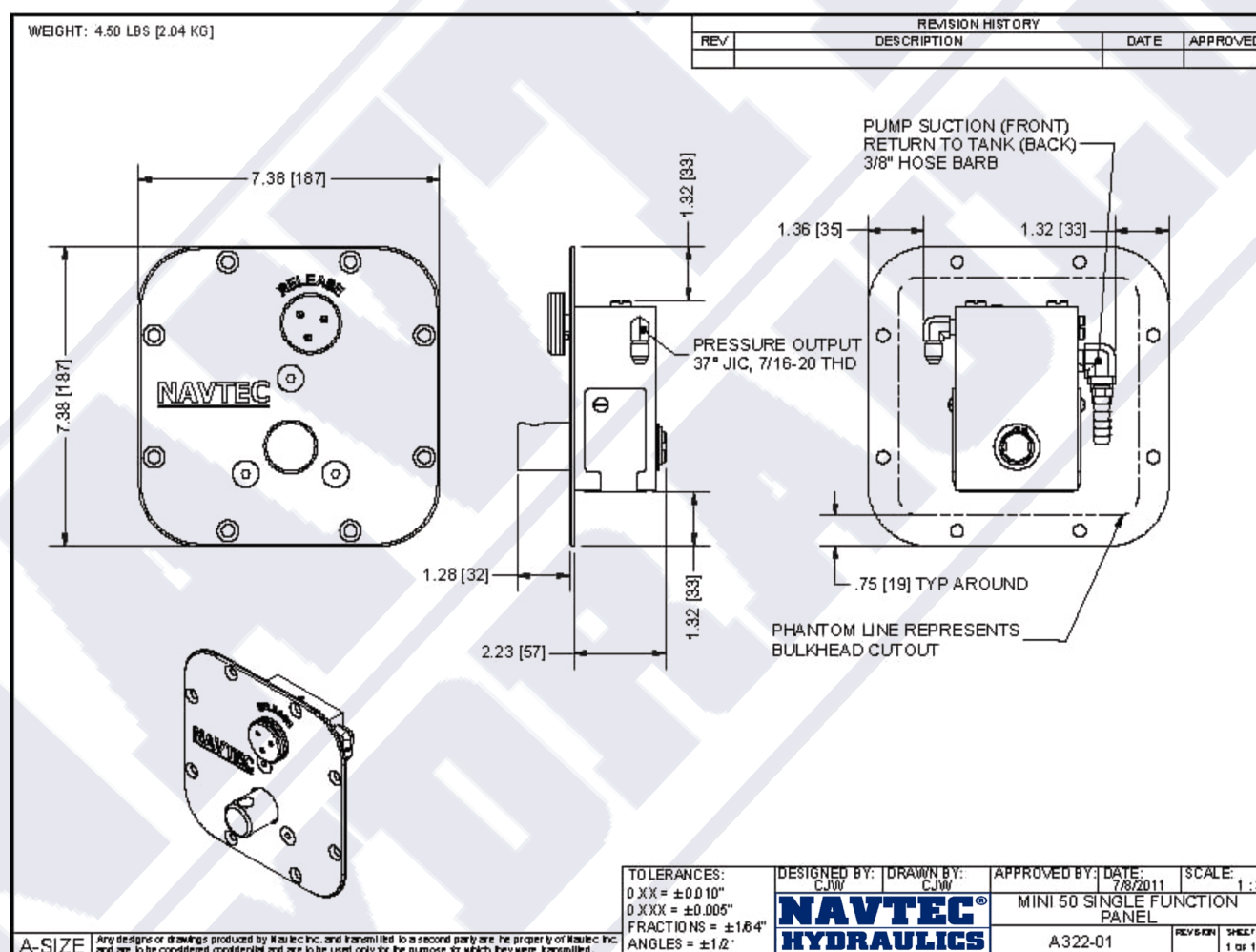


Navtec A322-01 Mini 50 Panel

The Navtec **A322-01 Mini 50 Panel** is a sleek, minimalist, light weight Single Function Panel without a Gauge designed for smaller cruising and racing boats.

For applications requiring only a Single Hydraulic Function, the **Mini 50 Panel** is smaller, lighter and faster, while utilizing the same proven, reliable design basics as our famous **System 50 Panel**. With less than half the weight, a 35% smaller face plate (7 3/8" (187mm) square) requiring 40% less mounting depth to install, and an oil flow rate that is 30% faster, the **Mini 50 Panel** incorporates an **adjustable** relief valve so over-tensioning can easily be prevented. A simple hydraulic solution for many applications, the **Mini 50 Panel** is also available with our standard 2 quart molded reservoir and related hardware as **A322-01A**.



www.NavtecHydraulics.com

800 Flanders Road • Building 10, #5 • Mystic, CT 06355 • Tel (860) 245-4616 • Fax (860) 245-4351